

PRODUCT PORTFOLIO

Introduction to our products and solutions



ABOUT US

We offer an extensive range of products with years of experience for various tasks within industrial and telecom industry.

Hunterhex is offering products for micro data center, ICT, telecom & power cabinets, controllers, cooling, AC power lines, DC backups for emergency networks as well as mobile networks for telecom operators globally.

Years of worldwide market presence and customer service experience has developed the business into being specialized in intelligent outdoor cabinets & shelters for batteries, fiber optic, power, telecom & industrial applications.

Infrastructure is one of the largest industries in the world which means that it has a large impact on the world and everyone in it. Hunterhex want to promote and be the change that moves it in a direction that contributes to both cleaner environments and smarter energy solutions.

To achieve this and stay competitive Hunterhex believe in the art of clear communication to promote transparency and to grow with both our clients and as an organization. We see this as a core fundamental in maintaining and building new relationships for the long term but also to create an openness to share information between each other and the industry that moves it forward.

This in return has given us the opportunity to stay ahead and better understand where the development is heading and what expectations must be met.

PRODUCT PORTFOLIO

Cabinets

Equipped Custom sized or Standard Cabinet modules with height 2000/1600/1200 mm, Width 650 mm , Depth 550mm.

Cabinets can be equipped with 19 inch sub-rack or 2 to 4 battery shelves that can carry from 50Ah to 1200Ah battery banks of extensive high cycle, high performance long life lithium phosphate LifePO4 batteries.

The cabinets can be equipped with DC Air-conditioners, DC Heat Exchangers, 19 inch rack mounted rectifiers and 19 inch rack mounted sine wave inverters, or a stand alone server cabinet including cooling.



Cabinets with HEX (Heat Exchangers)

Equipped Custom sized cabinet with Heat Exchanger



AC or DC Air Condition

Panel type with Plug & Play mounting in door or wall of cabinet or shelter. This series of DC air-conditioner products can be widely used in enclosed areas for climate control, such as:

- ✓ Data Centers
- ✓ In or outdoor telecom cabinets with IP55 or IP65
- ✓ Battery cabinets
- ✓ Shelters



PRODUCT PORTFOLIO

Heat Exchanger

This series of products can be widely used in enclosed area for climate control, such as wireless communication cabinet, battery cabinet, industry control cabinet, ICT cooling & Micro Data Center applications.

- ✓ EER: 4.0+
- ✓ 48VDC power supply
- ✓ Passive cooling: 30-500 W/K



Combined Climate Units (CCU)

Combined Climate Units “Combo” with DC HEX and inbuilt AC or DC compressor, operates as DC emergency cooling and energy saver nighttime & winter.

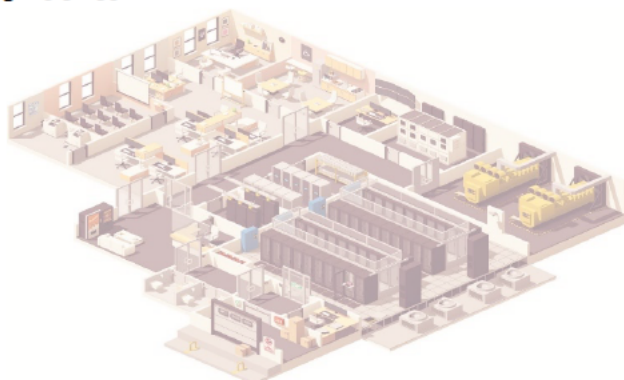
- ✓ Active Cooling: 1-5 kW
- ✓ HEX Cooling: 100-150 W/K
- ✓ Ventilation: 500 m



In Row Data Center Cooling

Data Center Cooling connected to fan.

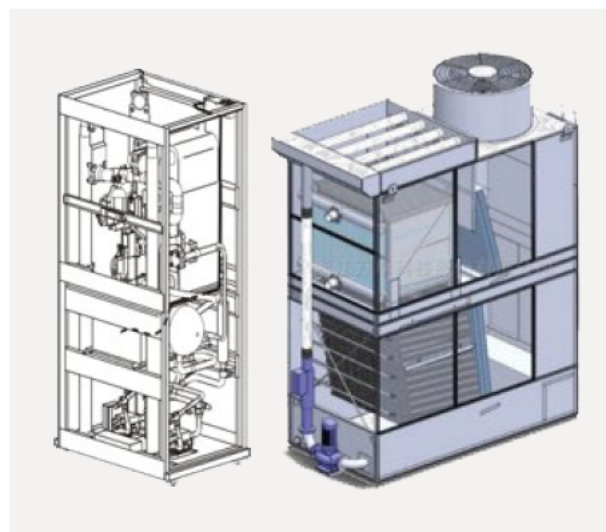
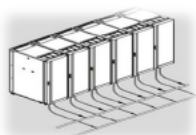
- ✓ Inverter Capacity Regulated
- ✓ Active Cooling: 25 30 35 kw
- ✓ Split Design



Datacenter Cooling – P2 module unit for ICT & Industry

Data Center Cooling connected to pipes.

- ✓ 170 kW cooling capacity



Server Rack

Intelligent free-standing server cabinet enclosure with 19" rack inside and built in cooling module.

DX Freon R134A or CW (Chilled Water) 3500W cooling capacity as standard.

Suitable for places such as schools, police stations, hospitals, offices or other places with limited space.

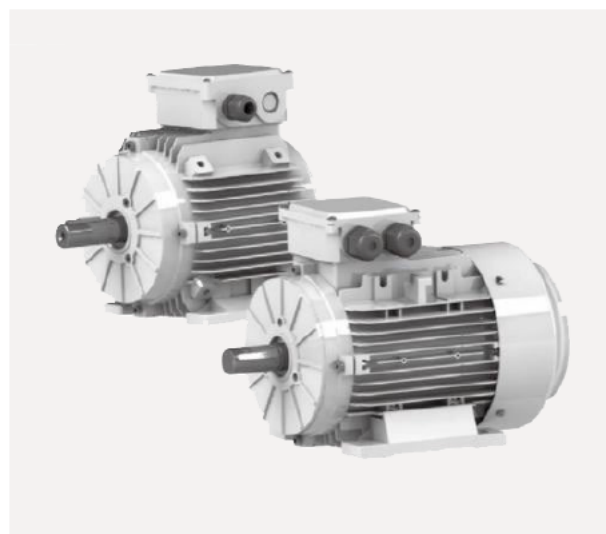


EC Motors

To be qualified for the next generation requiring higher energy saving products, the EC motors have the following advantages

Extremely high efficiency, average value is over IE4 norms. Also, high efficiency in a wide speed range up to 3600rpm with wide power range. Compact and light design with high uniformity in appearance design with other products.

Mounting dimensions according to the IEC norm, easy to replace from standard AC motors to EC motors. Various and flexible mounting types suitable for different applications.



Online UPS High Frequency

Online High Frequency UPS 1KVA to 10KVA, the small 1KVA series are with 2*9Ah inbuilt backup batteries and 2kVA – 10KVA with connection for external battery backup bank, Models supplied for Rack or Tower mounting.

Line Interactive UPS 1KVA to 5KVA, the small 1KVA series are with 2*9Ah inbuilt backup batteries and 2kVA – 5KVA with connection for external battery backup bank. Models supplied for Rack or Tower mounting.

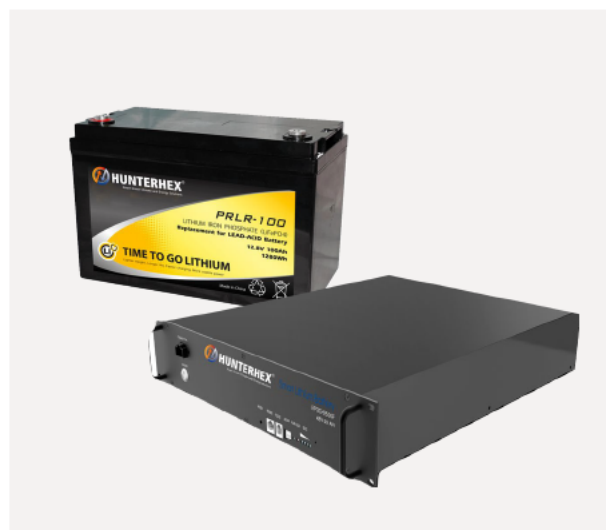


Lithium Batteries – Lithium phosphate batteries (LifePo4)

Hunterhex is a professional lithium-ion renewable energy product and solution provider. Based on strong technology development abilities and state-of-the-art manufacturing facilities, annually we produce about 10 GWs cells, delivering better safety, longer life cycle and higher energy.

We offer an extensive lineup of lithium-ion batteries ranging from Cylindrical, Pouch to Prismatic types, both NMC/NCA and LFP chemistry.

Available both in block as well as 19-inch rack solutions.



VRLA GEL Energy Storage Batteries

The Hunterhex range of front access VRLA batteries has been specifically designed for applications using 19" and 23" cabinets, especially telecoms. Reliability is assured with the patented post seal and a state-of-the-art design developed to comply with the latest IEC, British and Telcordia standards.

A 12+ years design life and centralized venting system add to the suitability and flexibility of this superior range.

HUNTERHEX® Cabinets & Enclosures take care of climate and temperature surrounding our VRLA batteries and keep the temperature between 20-30°C around the clock and year, this climate and temperature control is to prevent charging at too low or high temperatures to get maximum lifetime out of the VRLA batteries.



PRODUCT PORTFOLIO

Rectifiers

A compact and intelligent power system, Available in either 2U or 4U size in 19-inch racks, with option to have circuit breakers included.

Choose between 4*1 KW, 4*2 KW or 4*3 KW system.

- ✓ Up to 4 KW
- ✓ Up to 8 KW
- ✓ Up to 12 KW



Sine Wave Inverters

This new generation rack mounted inverter with dual input inverter is designed for high reliability communications applications.

The inverter is equipped with 220V AC output power supply and 48V DC power input, which fills the gap between a traditional UPS and a common pure sine wave inverter solution.

It uses a novel design structure that helps users to provide pure, stable and durable AC power for critical loads and has the same high reliability as the AC power supply system.



Portable Power Supply

Hunterhex Portable Power Supply all in one is the ideal easy to move and easy to use power supply solution for many activities at home, outdoor and for emergency.

- ✓ AC Input
- ✓ Solar Input
- ✓ Output AC & DC
- ✓ Renewable Energy
- ✓ Sufficient Power



Telecom Hybrid Solution*

Hunterhex Hybrid System for Telecom Applications.

Solution of power distribution with 48 V Lithium battery storage and solar charging option.

- 4 to 8 kW “3-in-1” Inverter/rectifier/solar charger, flexible 230V AC/48V DC/200-400V DC solar, input and output.

- Battery storage modular from 5 kWh-25 kWh in 5 kWh steps. Each 5-kWh step require 3U height in cabinet. All based on LiFePO₄ 100Ah 19-Inch rack mounted modules. Can be replaced with 50Ah Lithium or with VRLA/AGM batteries.

- Cabinet with 19-inch rack, 1000- and 1400-mm height, with cooling/heating options.

❖ **under development*



Special Projects

Hunterhex offers to help with special projects that might need a different design or specific need of equipment.

If your company want to discuss any type of special project please contact us to get more information from our Technical Project Manager and Design Team.

❖ Additional information contact info@hunterhex.com



Energy Storage Solution*

Hunterhex Smart Grid Inverter offer you an all-in-one multi-energy source. Consume your own solar power directly, store spare capacity in batteries for later use or in case of power cuts.

Inject to or consume from the grid only when needed.

The system is scalable from 4,5 to 36 kWh stored energy and 5 – 10 kW power capacity in order to fit your specific power requirements.

❖ **under development*



CONTACT US

With our extensive network around the globe and partners in different fields, please do not hesitate to contact us with your needs and we can create a solution that fits your requirements.

T. +46 763 916 550

info@hunterhex.com

SWEDEN

Hunterhex AB
EMEA
Färögatan 33
164 51 Kista, Sweden

HONG KONG

Hunterhex International Ltd APAC–SEA
Hong Kong Office 12/F, Henley Building
5 Queen's Road Central,
Central, Hong Kong

CHINA

Factory SEA
No.518, Yegang Road, Wujiang District
Suzhou City, Jiangsu Province
P.R.of China

RUSSIA

Hunterhex Moscow Russia